



Comhairle Cathrach
Bhaile Átha Cliath
Dublin City Council

Building Culture

Cultural Infrastructure Toolkit Summary



Why have we created this Cultural Infrastructure Toolkit?

This Toolkit, provides some of the building blocks to help guide the process of delivering cultural infrastructure, by helping developers:

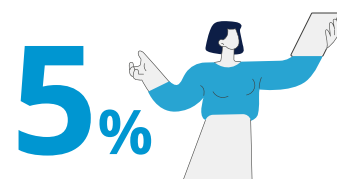
- identify and respond to a real need,
- design for a clearly defined cultural use, and
- select a delivery model that is sustainable for both developer and operator.

Dublin City Council Development Plan 2022-2028

Policies with the development plan require the delivery of 5% cultural and/or community uses within the footprint of a development if it:

- meets the thresholds of CUO25.
- is located within a Strategic Development Regeneration Areas (SDRA)?

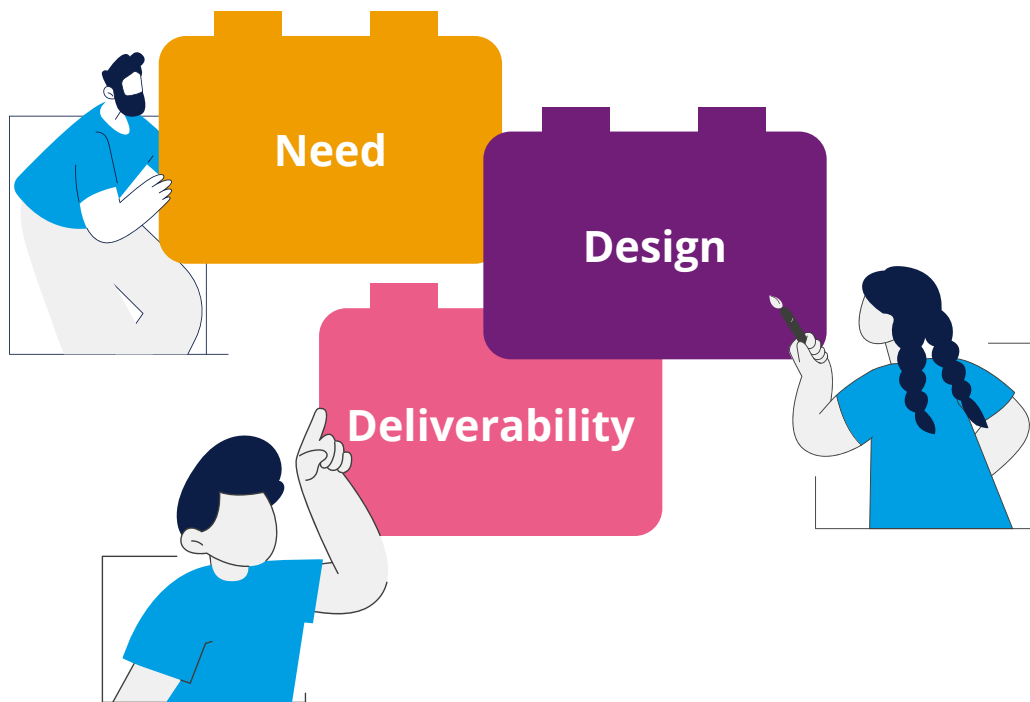
In addition to a number of Special Development Zones (SDZs) where cultural or community provision development is required.



Policies require 5% cultural and/or community uses.



What should I be considering?



What is the process I need to follow?

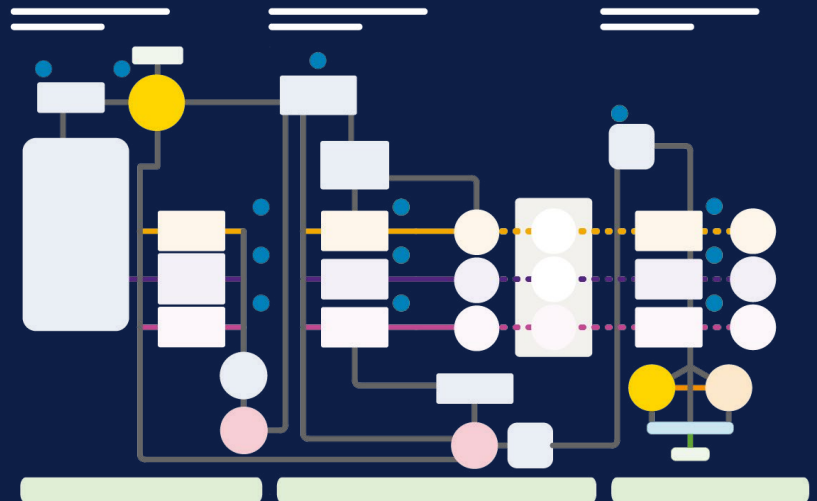
The recommended approach to delivering successful cultural infrastructure is based on collaboration and co-design with users (artists and communities), at each of 3 stages of the process; from **Pre-Planning (Development)**, **Planning Process (Assessment)** to **Post-Planning (Delivery)**.





The Decision Tree

The **Guidance Note** and **Toolkit Resources** have been designed to help you **make decisions during every stage of a project** and **encourage collaboration** and **co-design of cultural infrastructure**.



What is in it?

The Toolkit has five core documents, **2 guidance notes** and **3 toolkit resources**:

- **Guidance Note 1:** Cultural Infrastructure Development Process and Decision Tree
- **Guidance Note 2:** Cultural Infrastructure Assessments (inc. Cultural Audits)
- **Toolkit Resource 1:** Co-design Approaches (inc. Exemplars)
- **Toolkit Resource 2:** Artform Typologies and Specifications (inc. Exemplars)
- **Toolkit Resource 3:** Governance and Deliverability (inc. Exemplars)

Why is it important?

Cultural Infrastructure is one of the most **cost-effective forms** of social infrastructure that improves people's quality of life, social cohesion, and resilience.

It adds to the **vibrancy and reputation** of our city, creating spaces where both our **traditions and innovation** can flourish.

Providing **performance or workspaces for our creative communities** is essential and creates a **regenerative partnership** that can provide long-term sustainable uses.

Cultural infrastructure offers a **financial, social** and **environmental** return on investment by contributing to **thriving, healthy** and **attractive** places to visit, work and live.

What is the need?

As a city we are famed for our **writers, plays and music**, and have some **superb performances spaces and venues**, yet audiences in parts of our city struggle to engage. Dublin is home to:

c. **2500**

artists and other creative professionals call Dublin home.



41%

of these creatives are actively seeking workspaces.





What are the ingredients for success?

For Cultural Infrastructure to succeed it must be sustainable: rooted in the community; meet a real need; designed to a quality specification; enable modern creative professional practice, and reflect the preferences of artists and the wider communities of our city.



Who is responsible for its delivery?

Our own engagement tells us that approximately:

91%

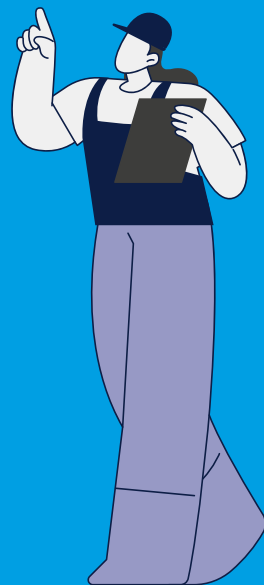
of developers recognize the importance of vibrant community and cultural spaces as part of the regeneration for Dublin.

72%

of developers support the intent of Chapter 12: Culture of the Dublin City Council Development Plan 2022-2028.

69%

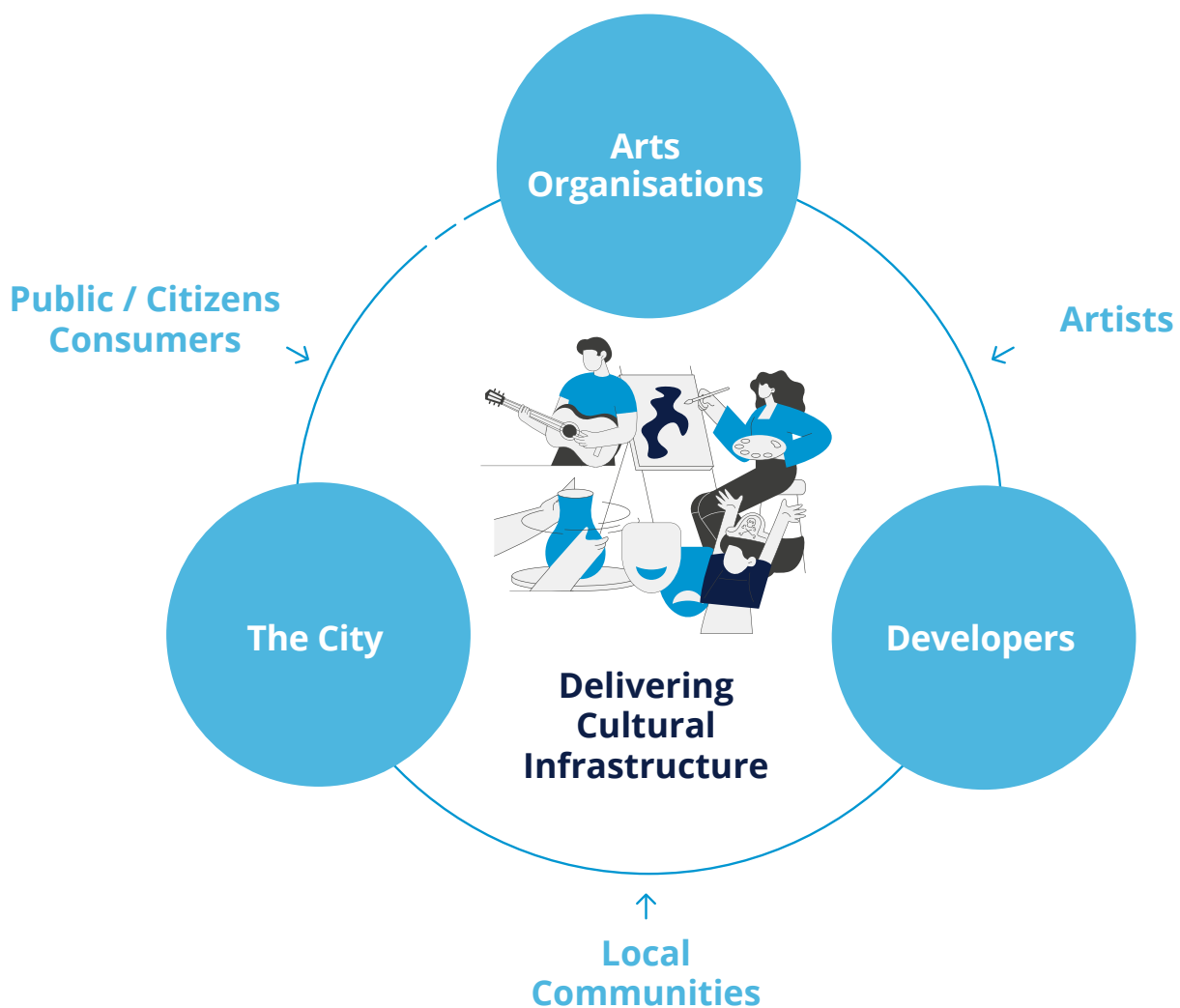
of developers recognize the importance of cultural space when considering their own development proposals.



Creating a Shared Language

This toolkit is a starting point for dialogue. Along with the policies it supports, it tells only half the story.

The rest will be told by the places we can successfully create together through collaboration between the City, Developers and Occupiers. What's more by engaging with artists, local communities and the wider public on the development of cultural space we'll ensure we deliver places that are used and valued now and in the future.





Comhairle Cathrach
Bhaile Átha Cliath
Dublin City Council

Prepared by:

Turley

ARROW